

It's what's on the surface that counts.

Gym Surfacing

Your guide to recreation and sports surfacing.
The modern gym is a tough environment – and it should be.
The success of your clients starts at the surface.



Unimat

Unimat's 12mm matting is the all-round performer for gym flooring in New Zealand. Warm and quiet, durable and comfortable, it delivers a safe, simple and seamless anti-slip surface that's both cost effective and high quality.



“ It has withstood tonnes of abuse, literally, and still looks good as new. The jigsaw pattern is a great fit; it doesn't pull apart and the overall look is very professional. We were so happy that we fitted out our second facility with it too.”

Alex Porter, Owner, CrossFit Auckland Group.

Made for:

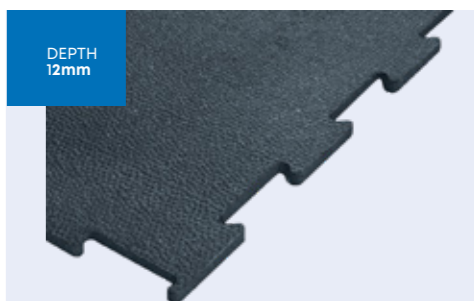
It's tough enough to take everything you throw at it, or throw on it, or jump, run or lift on it too.

Unimat surfacing provides a super hard wearing and robust surface for high-impact gym areas that require the very best in comfort and safety. It's the ideal flooring for all the weight, equipment and busy feet coming and going in your gym.

Made with:

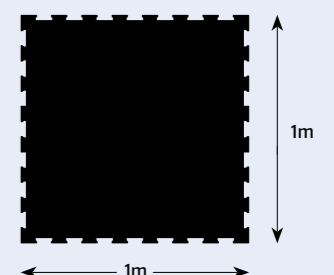
Unimat is constructed from 100% natural rubber. The material is UV resistant and non-toxic and is extremely resilient to wear and tear.

Available in 1m x 1m x 12mm sections, each mat can be quickly interlocked for an easy, stress-free installation.



TOP

BASE



1m





“It looks impressive. We’ve had nothing but very positive feedback from our members about how it looks and does its job.”

Image: Centre of Excellence, Christchurch



It's what's on the surface that counts.

Kura

The sound and shock absorption power of this 25mm thick matting comes from its industry-leading depth and precision European manufacturing. For the very best in safe, secure surfaces nothing beats the protection of Kura.



Made for:

This top of the range, premium rubber matting boasts 25mm thickness, studded base and a unique mosaic grip profile.

With a sure grip, huge shock-absorbing capability and simple cleaning and maintenance this surface is perfect for high-impact areas and gym floors in multi-storey buildings.

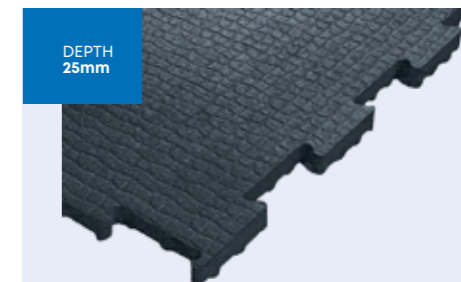
Made with:

Kura delivers style and substance, delivering comfort, durability and a long lasting return on your investment.

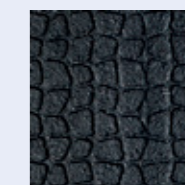
The matting is manufactured in Germany using recycled rubber from discarded vehicle tyres. This process delivers a super-tough, guaranteed quality product – one available in 1190mm x 850mm x 25mm sections.



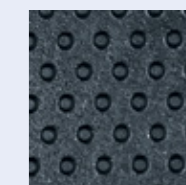
North Shore, Auckland



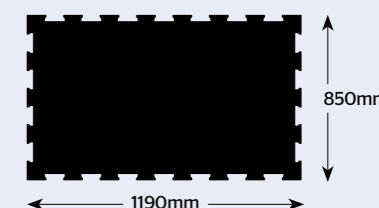
DEPTH 25mm



TOP



BASE



1190mm

850mm



Comfort Zone

Ensure your gym looks its best without compromising an iota of safety, usability and adaptability thanks to our 20mm thick Comfort Zone matting. With colour and style this soft, spongy matting puts spring in the step and joy in the jump.



“The sheets simply lock together with no glue required. We were able to cut and shape the matting easily with a sharp knife and ruler to fit it perfectly into the room.”

Image: Tauranga Boys High School, Tauranga

Made for:

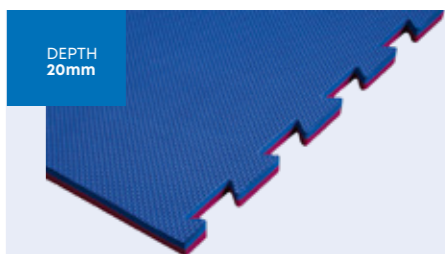
Delivering bounce, colour and comfort along with strength, resilience and stability, Comfort Zone matting is ideal for aerobic and general fitness areas.

This lightweight and malleable matting also has excellent structural strength – it won't lift and won't curl. But when you need to change your gym surface Comfort Zone is also easy to reposition and store.

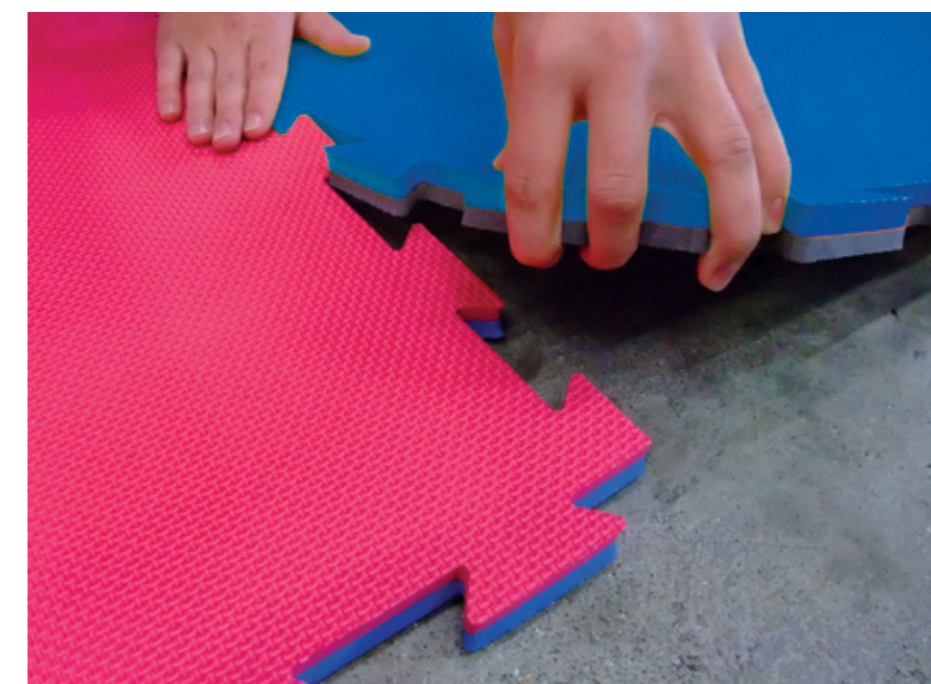
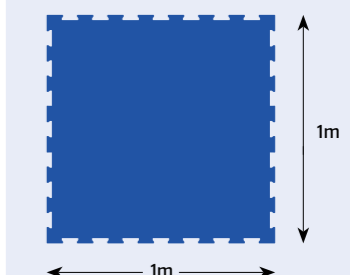
Made with:

Comfort Zone is available in 1m x 1m x 20mm interlocking sheets. As these mats are made from lightweight EVA foam even a large area can be installed quickly and easily.

With colour choices of red, blue, green and black it's also easy to mix and match and, in doing so, mark out different areas for different uses.



RED/BLUE GREEN/BLACK BLACK/GREEN



It's what's on the surface that counts.

We measure our work by the spread of the land, the heights of the client's dreams and, when all is said and done, by the width of their smiles.



Give us a call!

Our friendly New Zealand-based customer service team are ready to chat on **0800 686 124**

Visit our website: numatrec.co.nz
or email us: info@numat.co.nz

 **NUMAT
REC**